



# genasys

Text SBCAlert to 65513 to Register

## SIGN UP FOR ALERTS NOW

# Be prepared before an emergency strikes.

San Benito County will use the GEM notification system to alert residents about issues that may affect your safety, such as fires, floods, police activity, or extreme weather conditions.

Text SBCAlert to 65513 to get a link to the registration portal where you can let us know how you want to be notified in case of an emergency.



### REGISTER

Text SBCAlert to 65513 to register. Enter your current contact information to ensure we can reach you.



### EMERGENCY

During the next emergency, county officials will use the GEM notification system to quickly notify residents.



### ALERT

Receive an alert and follow the directions given. Early notification is key to saving lives and property during disasters.

Learn more at <https://sbcalert.genasys.com/portal/en>



# Registration Steps

To register your account from the Login page, click the *“Don’t have an account? Click here to register”* link. Once you are on the Registration page, enter an email or phone number to use as your ‘username’ and set your password. Note: if using a phone number it must be SMS enabled in order to be able to use the “Forgot password” link. Confirm password and click “register”.

**Important:** there is no auto-save feature, so remember to click the *“Update”* button after adding or changing any information.

Login

Email

OR

Prefix  Phone number

OR









External ID

Password

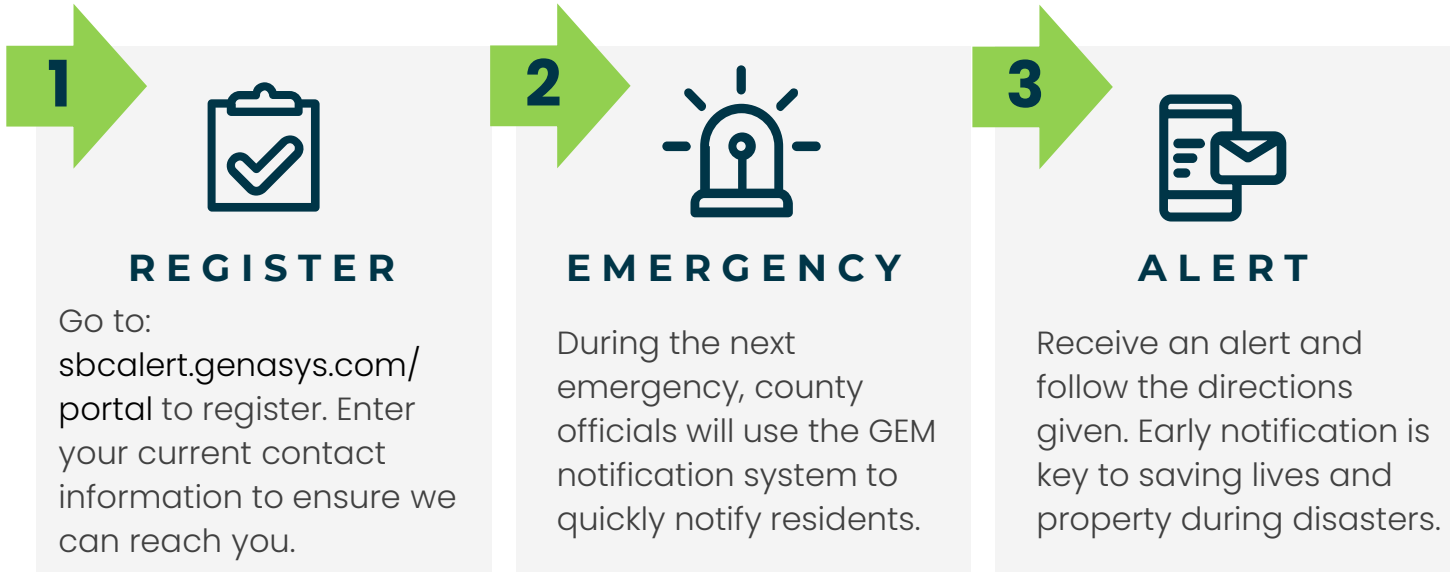
[Forgot your password?](#)

**LOG IN**

[Don't have an account? Click here to register](#)

- ← **1.** Once you have registered, fill out the Account details section, including your name, contact information, and preferred language.
- ← **2.** Register additional emails (such as work, personal, etc.).
- ← **3.** Register additional phone numbers (and make sure SMS is checked, if applicable).
- ← **4.** Add your address and any additional locations you may frequent (school, work, etc.). *Addresses are important to receive location targeted alerts.*
- ← **5.** You have the option to add relatives (that live in the area) to ensure they can also receive emergency alerts.
- ← **6.** Set your notification preferences: opt-in/out of notification types and set your device preferences.
- ← **7.** You can unsubscribe from the system at any time. Note: this will completely remove all contact data from the system.
- ← **8.** Log out. Remember to log back in and update your contact information if it changes.



Above is a grouped image that can be used on websites or other materials as you promote alert sign ups.